

## 572 Weber Street North

Waterloo, Ontario, Canada

Great Office Space in North Waterloo. Walking distance to Northfield ION LRT station and easy access to the Conestogo Expressway. Great location for any professional or tech office use.

### Available

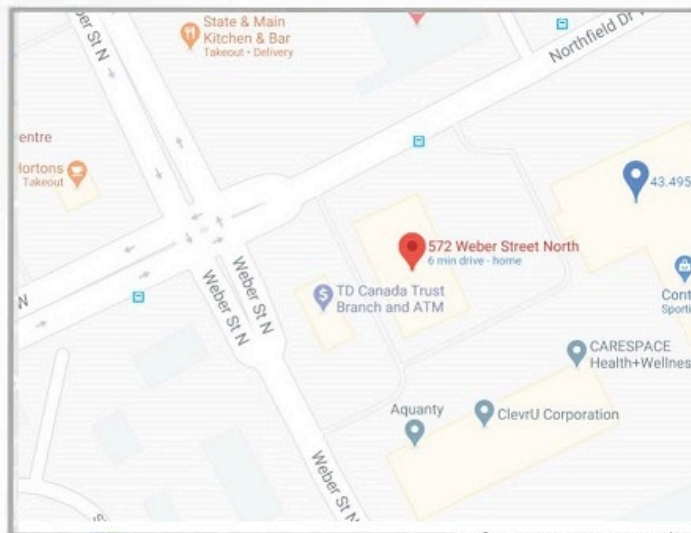
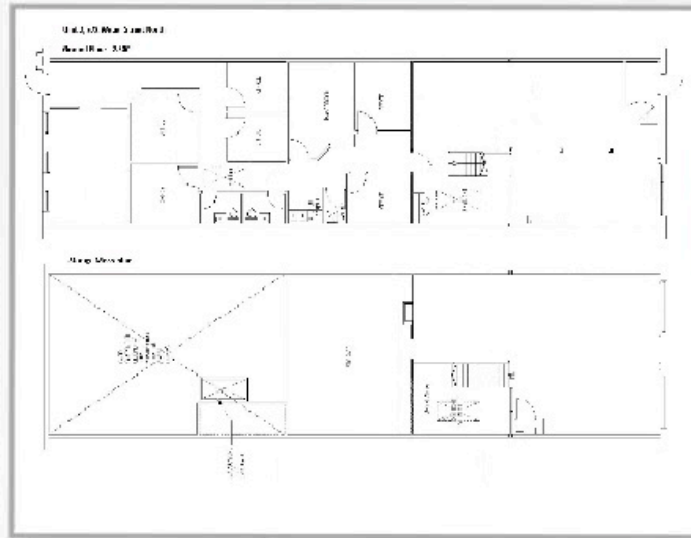
**Unit 2 - 2,500 sq ft + large storage mezzanine**

### Rates

- ▶ Net Rental Rate: \$14.50 per sq ft
- ▶ CAM (2020 est): \$6.85 per sq ft plus Utilities

### Specifications

- ▶ Good quality office space at the corner of Northfield & Weber
  - ▶ Significant leaseholds in place
  - ▶ Reconfiguration possible
  - ▶ Free parking onsite
  - ▶ Next door to the new Greystone Racquet Club
  - ▶ 24 Hour Access
  - ▶ Fiber onsite
  - ▶ Good Signage
- Walking Distance to Restaurants, Banks & Shops



### Brad Marsland

Marsland Centre Limited  
Tel: 519-886-2940  
Cell: 519-590-6939  
Fax: 519-886-5209  
Email: lbm@marsland.ca